



India Meteorological Department
(Ministry of Earth Sciences)

BULLETIN NO. : 04 (BOB/08/2022)

TIME OF ISSUE: 1930 HOURS IST

DATED: 11.09.2022

FROM: INDIA METEOROLOGICAL DEPARTMENT (FAX NO. 24643965/24699216/24623220)

TO: CONTROL ROOM, NDM, MINISTRY OF HOME AFFAIRS (FAX.NO. 23093750)
CONTROL ROOM NDMA (FAX.NO. 26701729)
CABINET SECRETARIAT (FAX.NO.23012284, 23018638)
PS TO HON'BLE MINISTER FOR S & T AND EARTH SCIENCES (FAX NO.23316745)
SECRETARY, MOES (FAX NO. 24629777)
H.Q. (INTEGRATED DEFENCE STAFF AND CDS) (FAX NO. 23005137/23005147)
DIRECTOR GENERAL, DOORDARSHAN (23385843)
DIRECTOR GENERAL, AIR (23421105, 23421219)
PIB MOES (FAX NO. 23389042)
UNI (FAX NO. 23355841)
D.G. NATIONAL DISASTER RESPONSE FORCE (NDRF) (FAX NO. 26105912, 2436 3260)
DIRECTOR, PUNCTUALITY, INDIAN RAILWAYS (FAX NO. 23388503)
CHIEF SECRETARY, ODISHA (FAX NO. 0674-2536660)
CHIEF SECRETARY, ANDHRA PRADESH (FAX NO. 0863-2441029, 08645-246600)
CHIEF SECRETARY, WEST BENGAL (FAX NO. 033-22144328)
CHIEF SECRETARY, CHATTISGARH (FAX NO. 771-2221206)
CHIEF SECRETARY, JHARKHAND (FAX NO. 651-2400255)
CHIEF SECRETARY, GOVT. OF MADHYA PRADESH (FAX NO. 755-2441076)
CHIEF SECRETARY, GOVT. OF TELANGANA (FAX NO. 040-23453700)
CHIEF SECRETARY, GOVT. OF MAHARASHTRA (FAX NO. 022- 22028594)

Sub: Depression over south Chhattisgarh

The Depression over south Odisha moved nearly westwards with a speed of 28 kmph during past 06 hours and lay centered at 1730 hrs IST of today, the 11th September 2022, over south Chhattisgarh near latitude 19.9°N and longitude 81.7°E, about 160 km west of Bhawanipatna (Odisha), 40 km south-southeast of Kanker (Chhattisgarh), 100 km north-northwest of Jagdalpur (Chhattisgarh) and 250 km east of Chandrapur (Maharashtra).

It is likely to move nearly westwards across south Chhattisgarh during next 12 hours and weaken gradually.

Warnings:

(i) Rainfall (Warning Graphics enclosed)

11th September: Rainfall at most places with **heavy to very heavy rainfall** at isolated places is very likely over Odisha, Chhattisgarh, Gangetic West Bengal and Telangana and isolated **heavy rainfall** is very likely over coastal Andhra Pradesh, Vidarbha and East Madhya Pradesh.

12th September: Rainfall at most places with **heavy to very heavy rainfall** at isolated places is likely over Chhattisgarh, Gangetic West Bengal and East Madhya Pradesh and **heavy rainfall** at isolated places is likely over Odisha, Vidarbha and Telangana.

13th September: Rainfall at most places with **heavy to very heavy rainfall** at isolated places is likely over East Madhya Pradesh and **heavy rainfall** at isolated places is likely over Chhattisgarh, Odisha and Vidarbha.

(ii) Wind warning

➤ Squally winds speed reaching 40-50 kmph gusting to 60 kmph are very likely to prevail over northwest & westcentral Bay of Bengal and along & off North Andhra Pradesh, Odisha & West Bengal coasts on 11th & 12th September and off North Andhra Pradesh & Odisha coasts on 13th September, 2022.

(iii) Sea condition

➤ Sea condition will be rough to very rough over northwest & westcentral Bay of Bengal and along & off Andhra Pradesh, Odisha & West Bengal coasts on 11th & 12th September and off North Andhra Pradesh & Odisha coasts on 13th September, 2022.

(iv) Fishermen Warning (Warning graphics enclosed)

➤ Fishermen are advised not to venture into northwest & westcentral Bay of Bengal and along & off Andhra Pradesh, Odisha & West Bengal coasts on 11th & 12th September and off North Andhra Pradesh & Odisha coasts on 13th September, 2022.

The next bulletin will be issued at 0230 hrs IST of tomorrow, the 12th September, 2022.

(Ananda Kumar Das)
Scientist-E,
Cyclone Warning Division

Copy to: ACWC Kolkata/ ACWC Chennai/ CWC Bhubaneswarr//CWC Visakhapatnam/MC Amravati/ MC Bhopal



OBSERVED AND FORECAST TRACK OF DEPRESSION OVER SOUTH CHHATTISGARH & NEIGHBOURHOOD BASED ON 1200 UTC OF 11th SEPTEMBER, 2022



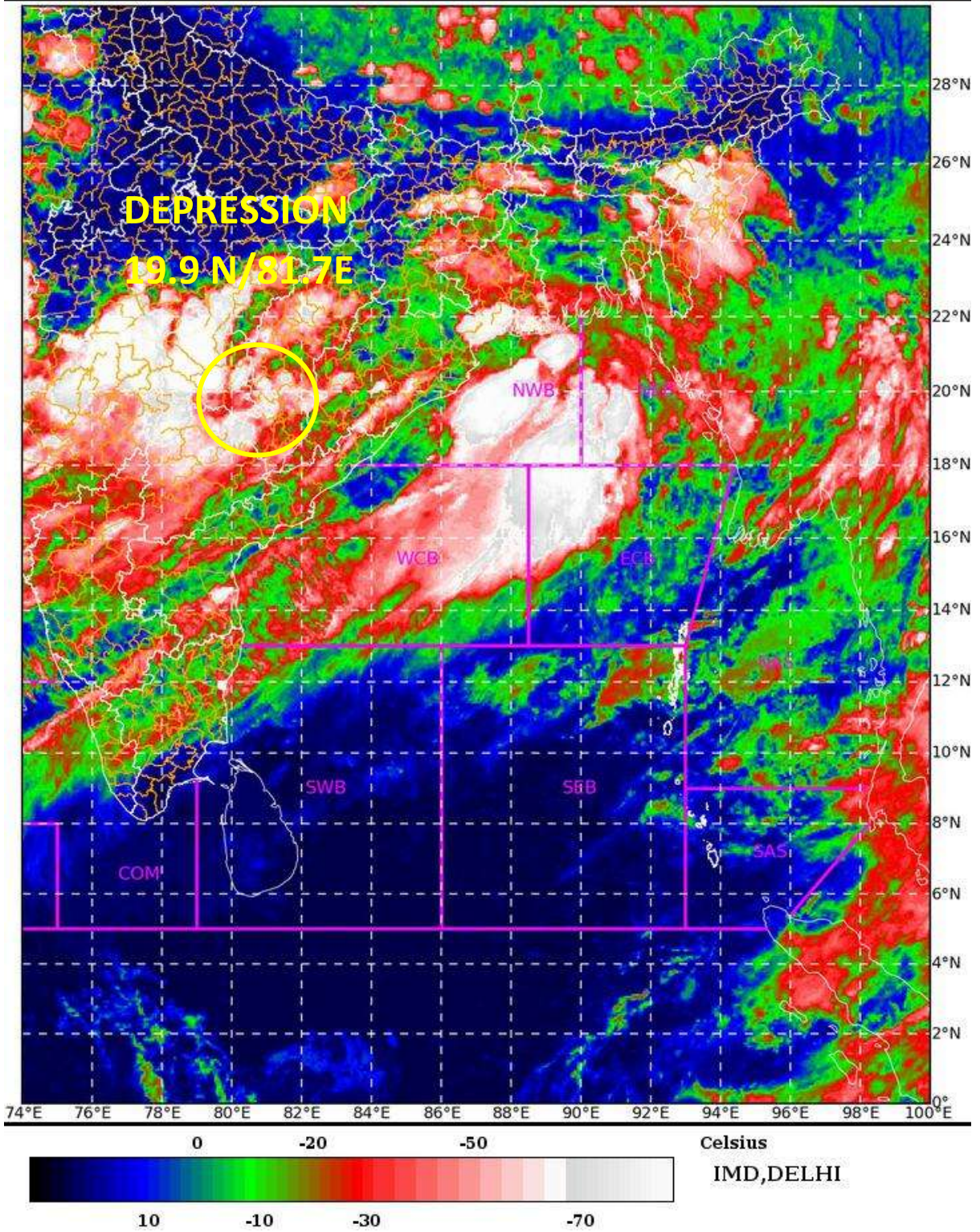
DATE/TIME IN UTC
IST=UTC + 0530
L: LOW PRESSURE AREA
WML: WELL MARKED LOW PRESSURE AREA
D: DEPRESSION (17-27 KT)
DD: DEEP DEPRESSION (28-33 KT)
CS: CYCLONIC STORM (34-47 KT)
SCS: SEVERE CYCLONIC STORM (48-63KT)
VSCS: VERY SEVERE CYCLONIC STORM (64-89 KT)
ESCS: EXTREMELY SEVERE CYCLONIC STORM (90-119 KT)
SuCS: SUPER CYCLONIC STORM (≥ 120 KT)

- LESS THAN 34 KT
- 34-47 KT
- ≥ 48 KT
- OBSERVED TRACK
- FORECAST TRACK
- CONE OF UNCERTAINTY

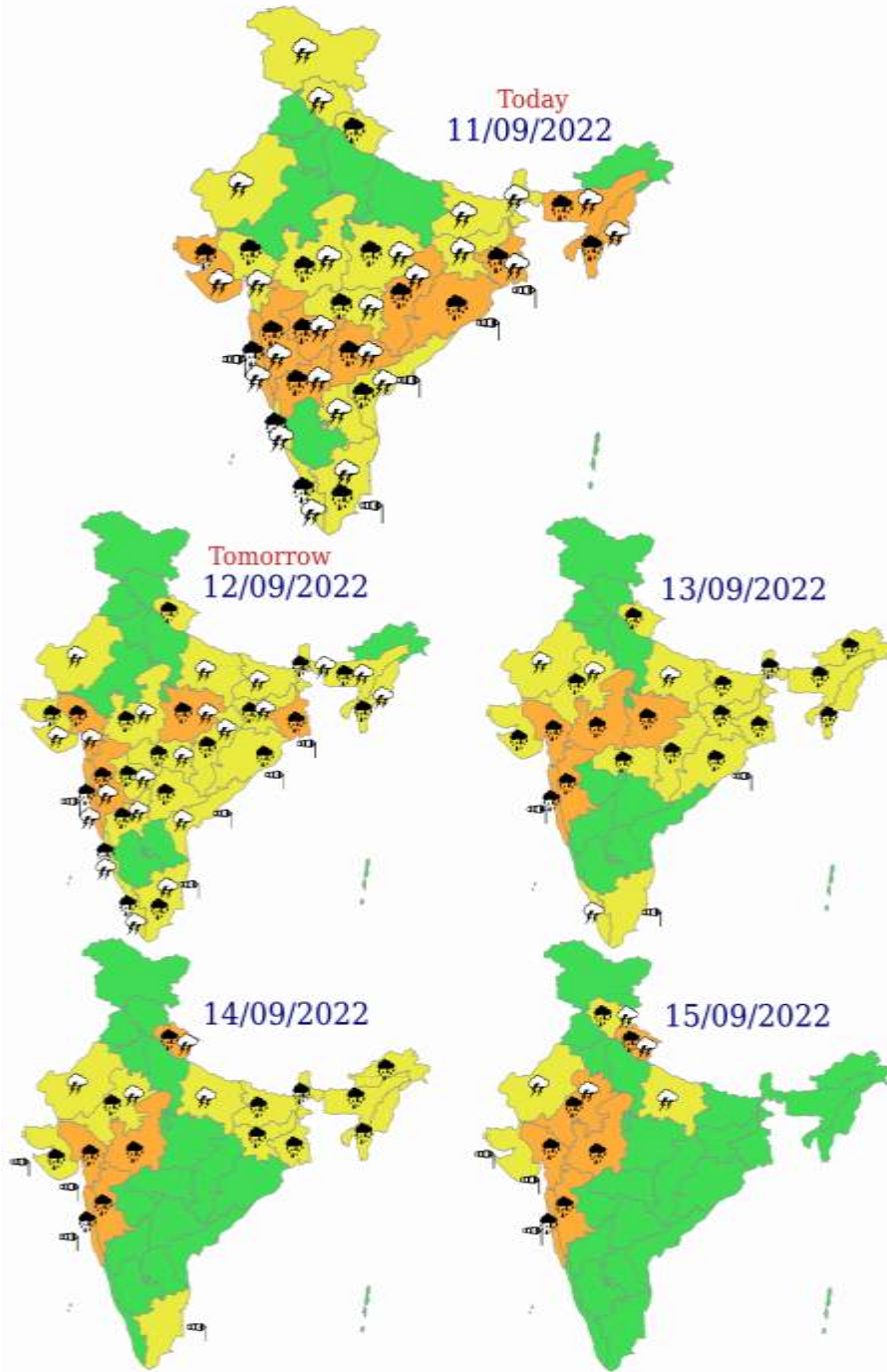
SAT : INSAT-3D IMG 11-09-2022/(1330 to 1356) GMT

IMG_TIR1_TEMP 10.8 um 11-09-2022/(1900 to 1926) IST

L1C Mercator



Weather Warning Graphics



WARNING

| |
|------------------------|
| WARNING (TAKE ACTION) |
| ALERT (BE PREPARED) |
| WATCH (BE UPDATED) |
| NO WARNING (NO ACTION) |

 Heavy Rain

 Strong Winds

Fishermen warning graphics

